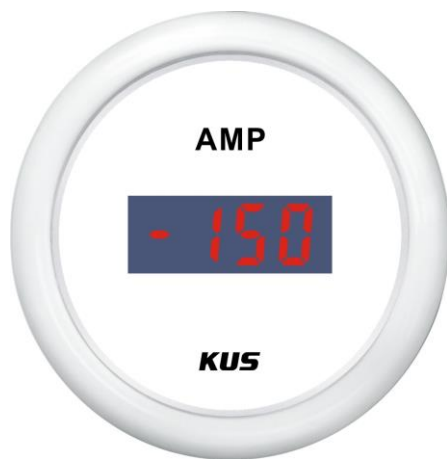


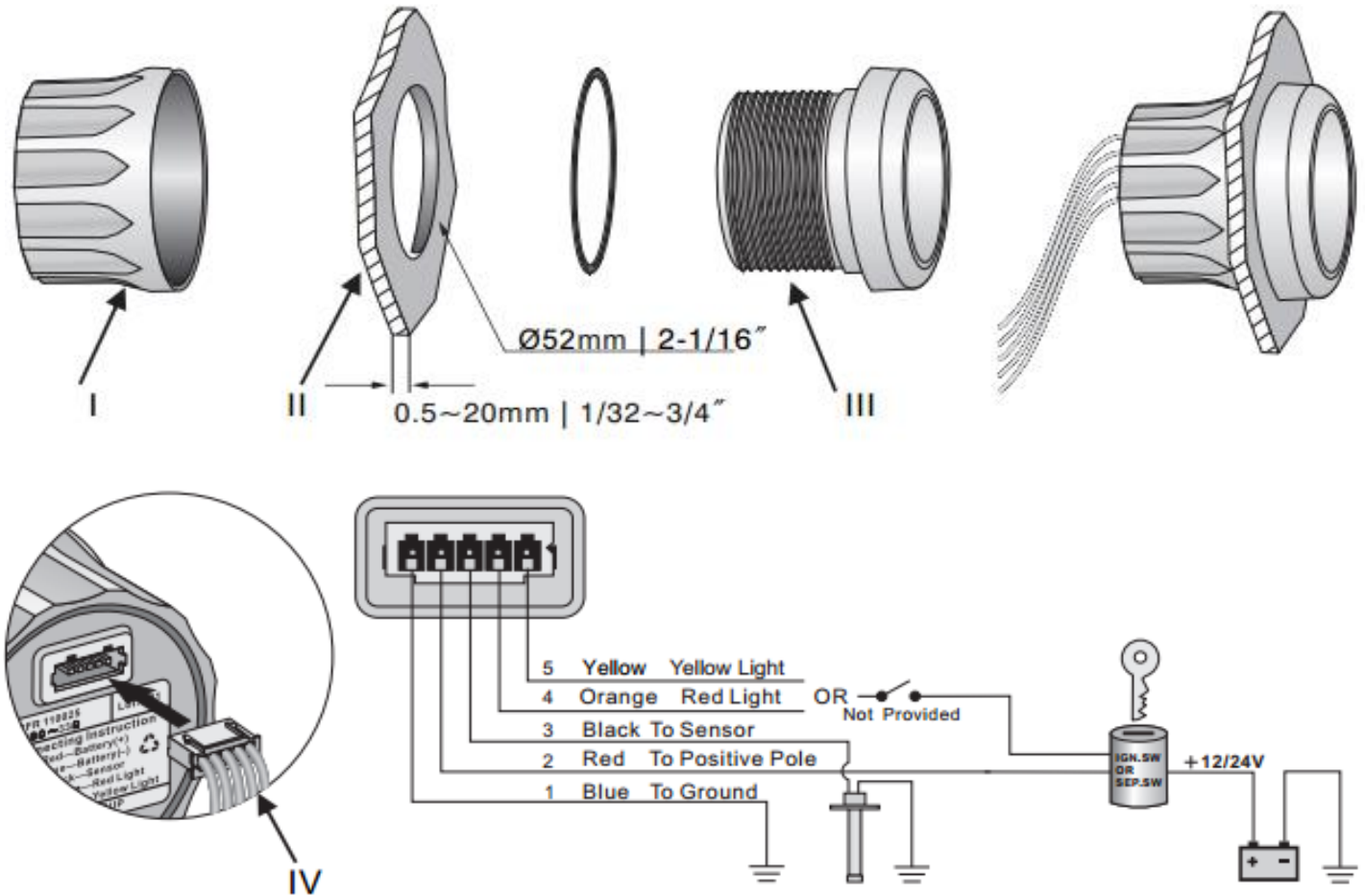
Product Data Sheet



Description: The Ammeter provides an overview of the entire electric system, signifying to the user whether the system is charging or draining the battery charge. The analog Ammeter is available for $\pm 50A$ or $\pm 80A$ and would require a current pick-up unit, the Digital Ammeter is available for $\pm 150A$ and includes a current pick-up unit.

Product Type:	Ammeter	
Product Name:	CEAR	
Bezel:	SS 316 Stainless Steel	Black or White Plastic
Face Plate:	Black	White
Mounting Dimension:	52mm, 2"	
Protection Rating:	IP67; can work up to 1m under water	
Signal:	Matched with KUS current pick-up unit	
Indicating Range:	$\pm 50A$ or $\pm 80A$ or $\pm 150A$	
Display	LCD	
Operating Voltage:	12/24V	
Rated Power Draw:	125mW	
Background light:	Red or Yellow	
Connector:	Multi-plug socket connection	

Installation Instructions



INSTALLATION STEPS

1. Cut a 52mm (2 1/16") diameter panel hole (II). You will need a minimum clearance of 55mm (2 3/16") behind the panel to fit the gauge.
2. Remove fastening ring (I). There is an alignment tab on the gauge body (III), place the gauge in the panel hole and mark the position of this tab to correctly align the gauge.
3. According to wiring instruction to do wire connection. Gauge can be connected to 12/24V power directly.
4. Select either red or yellow as backlight by your fondness.
5. Insert wire harness (IV) into port at the back of the gauge.
6. If you purchased a voltmeter gauge, there is no black wire in the (# IV) wire harness.