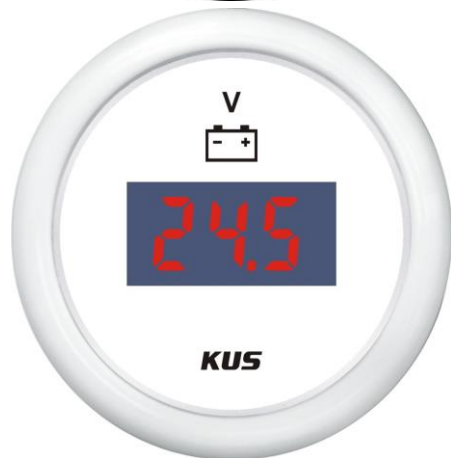


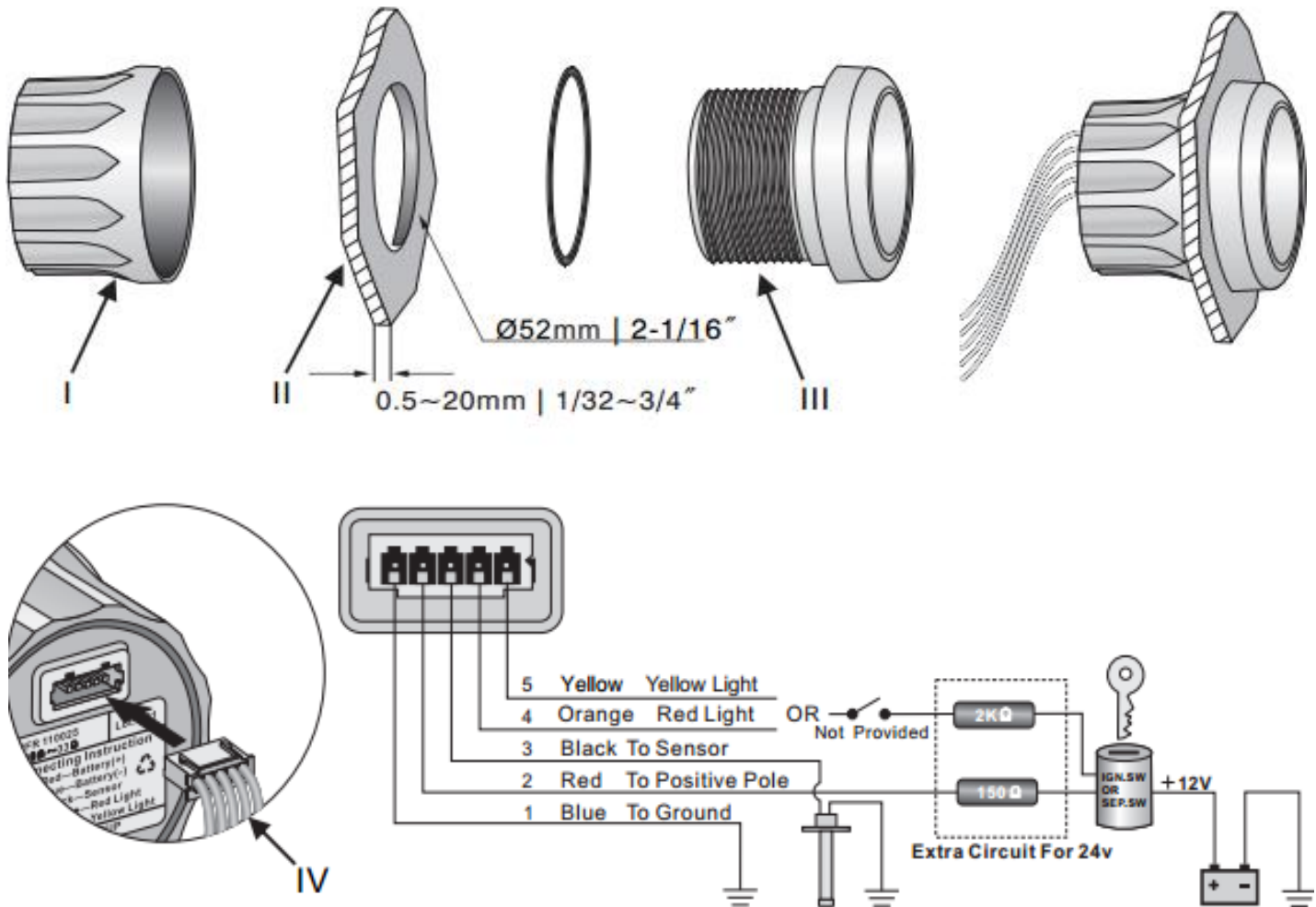
## Product Data Sheet



**Description:** The Voltmeter allows the user to monitor their vehicle's electrical system, ensuring that it is operating properly and efficiently. When the engine is running, the gauge should read approximately 14V on a 12V system, and should read approximately 27V on a 24V system. The Analog Voltmeter allows the user to measure 8V-16V; the Digital Voltmeter allows the user to measure 8V-32V.

<b>Product Type:</b>	Voltmeter	
<b>Product Name:</b>	CEVR	
<b>Bezel:</b>	SS 316 Stainless Steel	Black or White Plastic
<b>Face Plate:</b>	Black	White
<b>Mounting Dimension:</b>	52mm, 2"	
<b>Protection Rating:</b>	IP67; can work up to 1m under water	
<b>Signal:</b>	8~32V	
<b>Indicating Range:</b>	Empty- Full LCD Display	
<b>Operating Voltage:</b>	12VDC or 24VDC system.	
<b>Rated Power Draw:</b>	125mW	
<b>Background light</b>	Red or Yellow	
<b>Connector:</b>	Multi-plug socket connection	

## Installation Instructions



## INSTALLATION STEPS

1. Cut a 52mm (2 1/16") diameter panel hole (II). You will need a minimum clearance of 55mm (2 3/16") behind the panel to fit the gauge.
2. Remove fastening ring (I). There is an alignment tab on the gauge body (III), place the gauge in the panel hole and mark the position of this tab to correctly align the gauge.
3. Insert gauge through panel from the front, fit and tighten fastening ring (I) from the rear.
4. Connect wires according to wiring instruction. Note the use of dropping resistors for 24V circuit. Select either Orange or Yellow wires for backlighting. Wire colour corresponds with backlight colour.
5. Insert wire harness (IV) into port at the back of the gauge.
6. Please note, if the gauge is a voltmeter there is no black wire or resistors in the kit.

