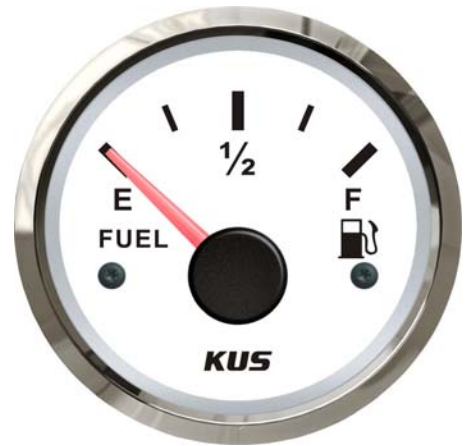
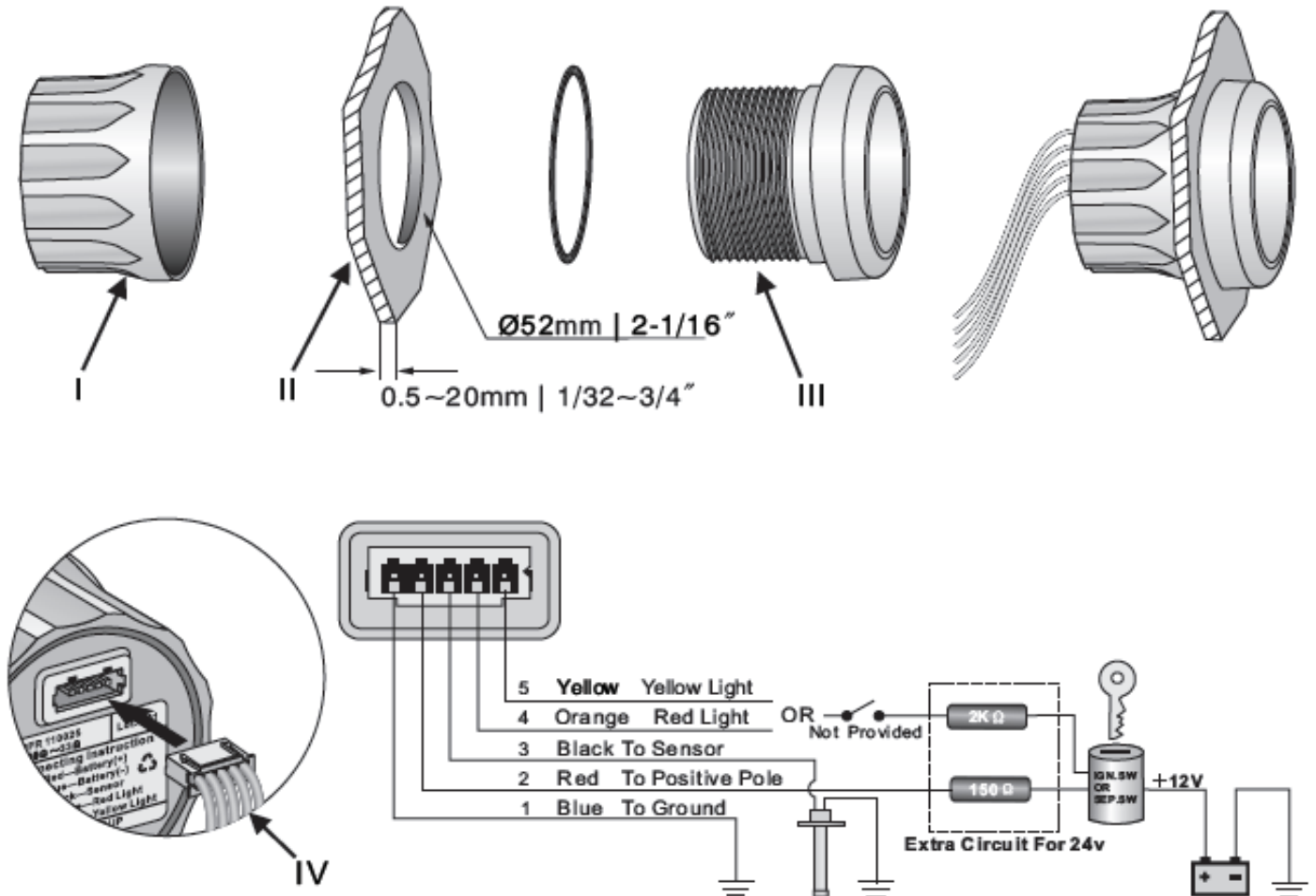


Product Data Sheet



Description:	The Fuel/Diesel Level Gauges allow the user to remotely monitor the liquid level in the tank. These level gauges will work with any level sender with the corresponding resistive output.		
Product Type:	Fuel Level Gauge		
Product Name:	CPFR		
Bezel:	SUS 316 Stainless Steel	Black Plastic	White Plastic
Face Plate:	Black	White	
Mounting Dimension:	52mm, 2"		
Protection Rating:	IP 67		
Input Signal:	240~33Ω	Custom signal available	
	0~180Ω		
Indicating Range:	Empty- Full		
Operating Voltage:	12V/24V		
Background light	Red or Yellow LED	Custom color available	
Connector:	Multi-plug socket connection		
Movement:	Cross coil motor movement		

Installation Instructions



INSTALLATION STEPS

1. Cut a 52mm (2 1/16") diameter panel hole (II). You will need a minimum clearance of 55mm (2 3/16") behind the panel to fit the gauge.
2. Remove fastening ring (I). There is an alignment tab on the gauge body (III), place the gauge in the panel hole and mark the position of this tab to correctly align the gauge.
3. Insert gauge through panel from the front, fit and tighten fastening ring (I) from the rear.
4. Connect wires according to wiring instruction. Note the use of dropping resistors for 24V circuit. Select either Orange or Yellow wires for backlighting. Wire colour corresponds with backlight colour.
5. Insert wire harness (IV) into port at the back of the gauge.
6. Please note, if the gauge is a voltmeter there is no black wire or resistors in the kit.