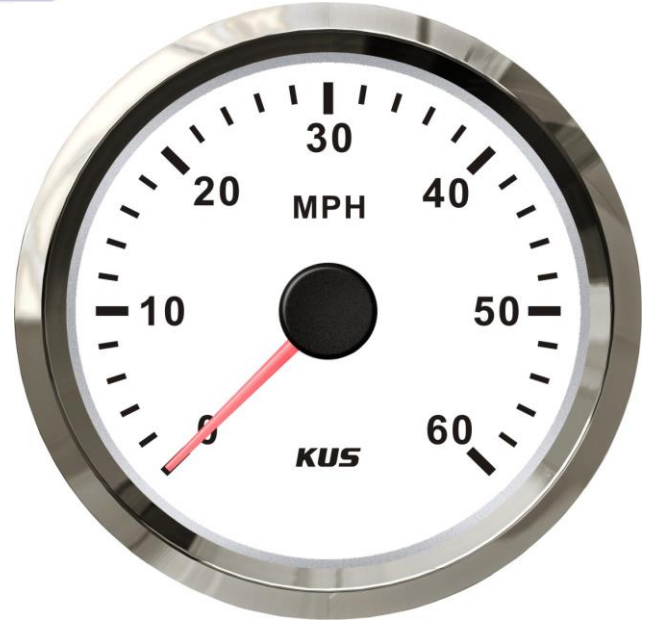


Product Data Sheet



Description: The NMEA Speedometer gauge allows the user to remotely monitor the speed of a vessel. These level gauges will work with NMEA 2000 senders or resistive type senders with an analog converter.

Product Type: Speedometer Gauge

Product Name: NMOB

Bezel: SUS 316 Stainless Steel

Face Plate: Black White

Mounting Dimension: 85mm, 3 3/8"

Protection Rating: IP 67

Input Signal: NMEA 2000 & J1939

Indicating Range: 0 - 60MPH

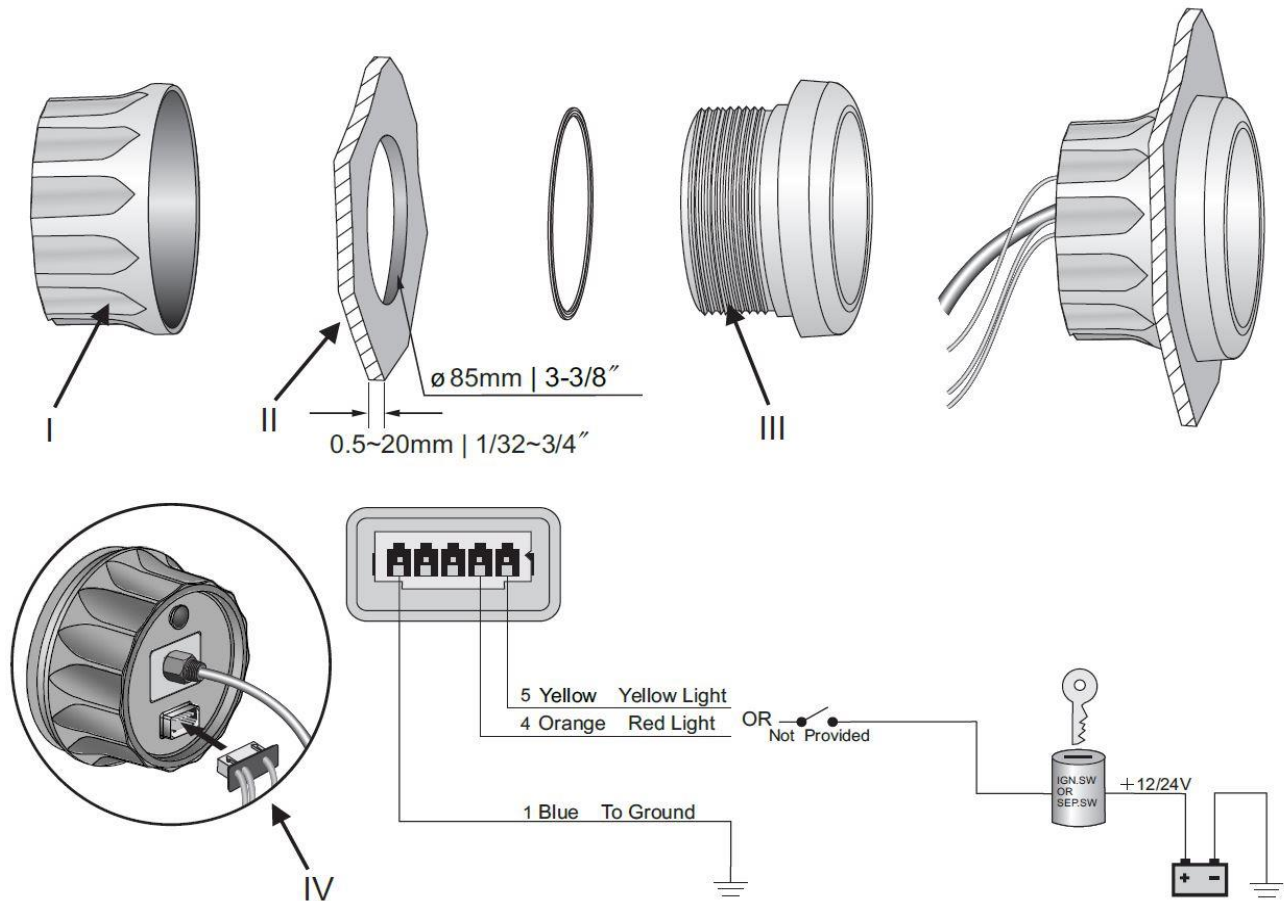
Operating Voltage: 12V/24V

Background light Red LED

Connector: Standard NMEA 2000 cable. 1 meter long

Movement: Cross coil motor movement

Installation Instructions



INSTALLATION STEPS

1. Cut a 85 mm(3 3/8") diameter panel hole(# II).You will need a minimum clearance of 85 mm(3 3/8") behind the panel to fit the gauge(# III).
2. Place the gauge body (# III) in the panel hole(# II),and then fasten it with fastening ring(# I).
3. Insert wire harness into port, and connect the ventilation hose with the bronze fitting of speedometer. Please make sure the connection is tight.
4. According to wiring instruction to do wire connection. Gauge can be connected to 12VDC and 24VDC power directly.
5. Select either red or yellow backlight by your fondness.