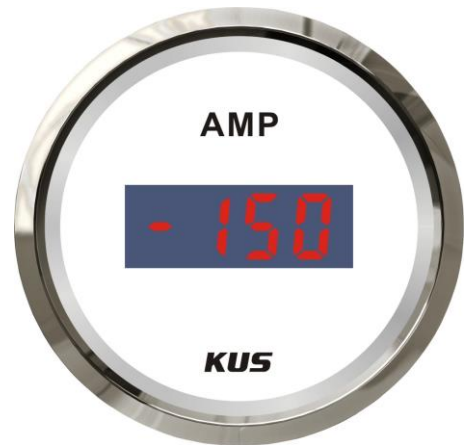


Product Data Sheet

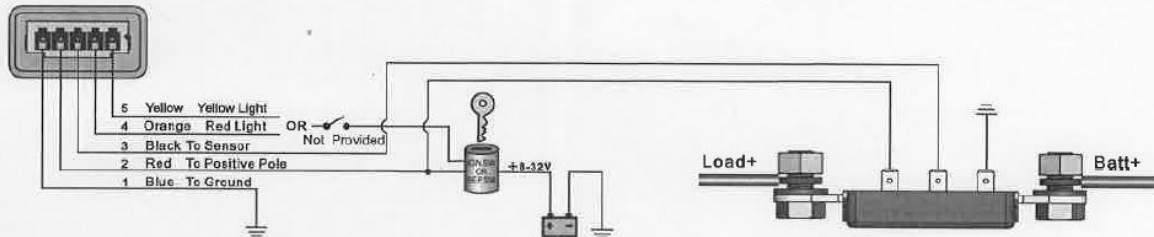
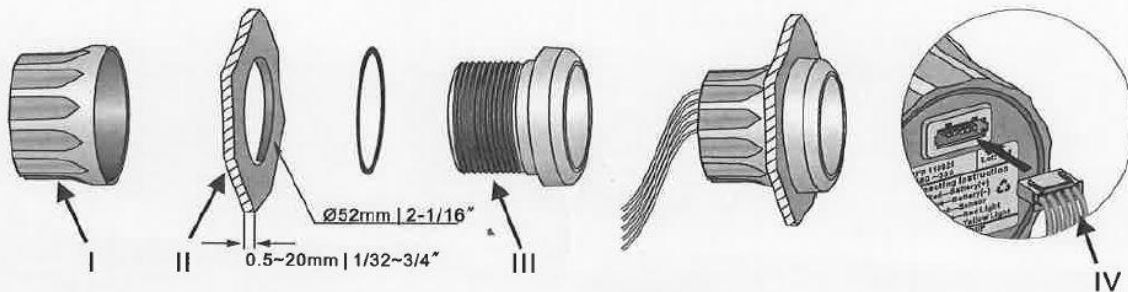


Description: The Ammeter provides an overview of the entire electric system, signifying to the user whether the system is charging or draining the battery charge. The analog Ammeter is available for $\pm 50A$ or $\pm 80A$ and would require a current pick-up unit, the Digital Ammeter is available for $\pm 150A$ and includes a current pick-up unit.

Product Type:	Ammeter	
Product Name:	CEAR	
Bezel:	SS 316 Stainless Steel	Black or White Plastic
Face Plate:	Black	White
Mounting Dimension:	52mm, 2"	
Protection Rating:	IP67; can work up to 1m under water	
Signal:	Matched with KUS current pick-up unit	
Indicating Range:	$\pm 50A$ or $\pm 80A$ or $\pm 150A$	
Display	LCD	
Operating Voltage:	12/24V	
Rated Power Draw:	125mW	
Background light:	Red or Yellow	
Connector:	Multi-plug socket connection	

Installation Instructions

INSTALLATION INSTRUCTIONS



INSTALLATION STEPS

1. Cut a 52 mm (2 1/16") diameter hole in panel (II) allow clearance of 55mm (2 3/16") behind the panel.
2. Remove fastening ring (I), insert Gauge from front. Tighten gauge (III) using fastening ring (I)
3. Insert the wire harness (IV) firmly in the gauge
4. Connect cables according to diagram. Connect to 12 or 24 Volt.
5. Choose either red or yellow back light
6. Be sure to connect the cables to the sensor correctly, otherwise charging will show as consumption (- amp).
7. Important: Ensure the main cable size is sufficient to stand the current you expect to charge or consume.