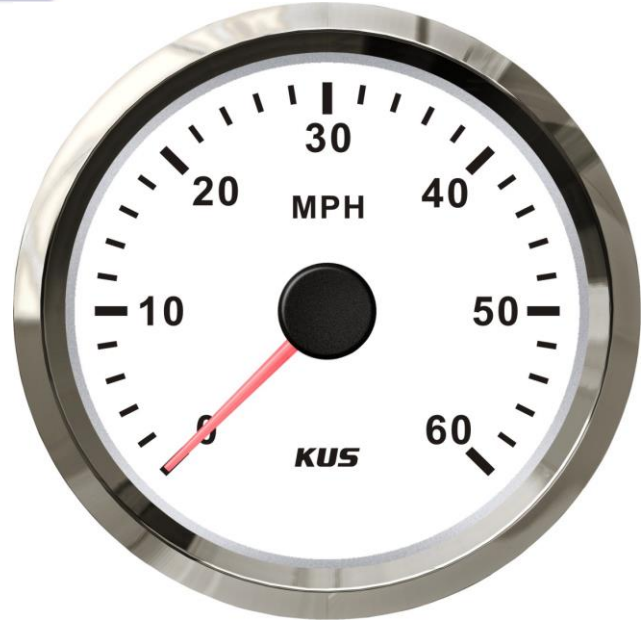
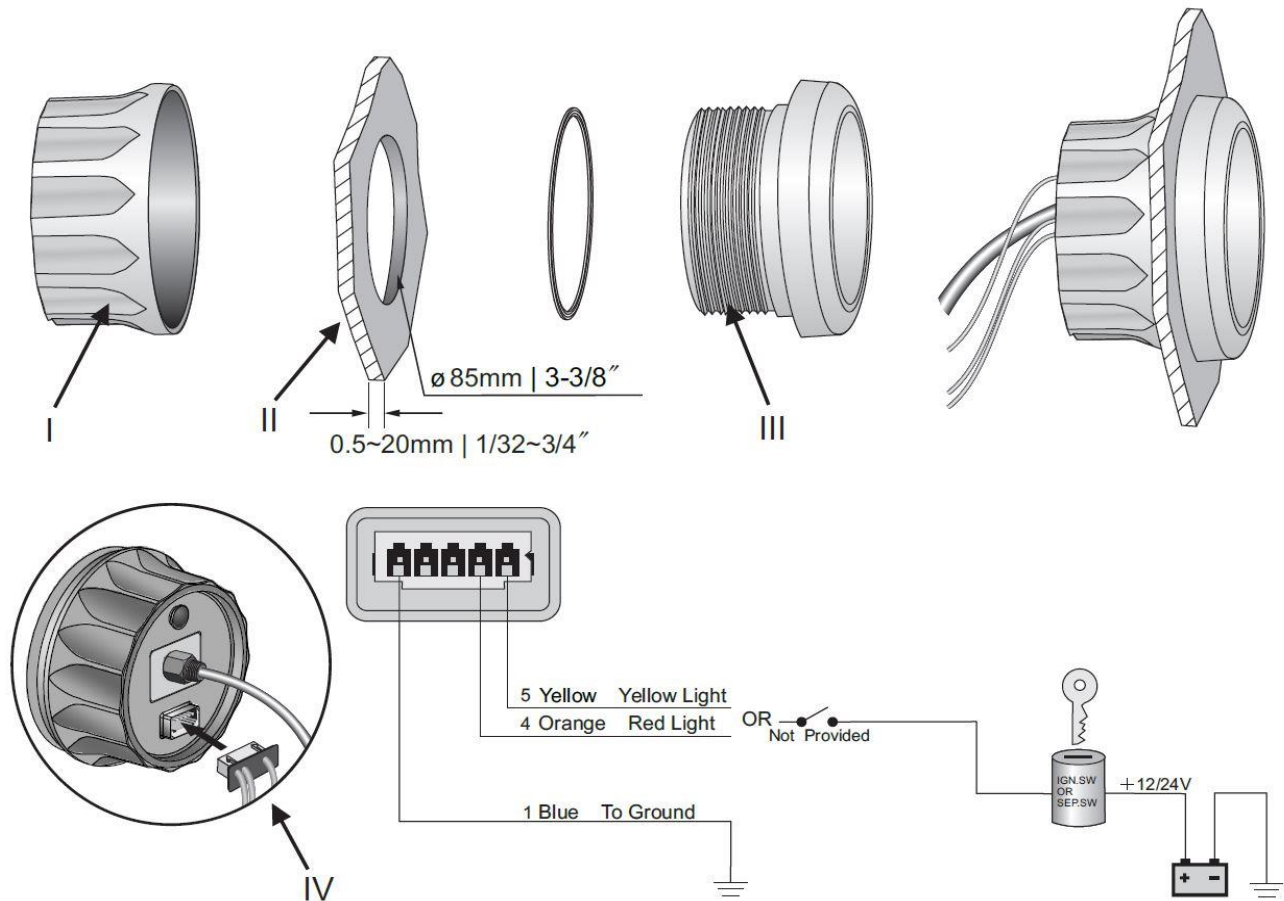

Product Data Sheet



Description:	The NMEA speedometer gauge allows the user to remotely monitor the speed of a vessel. These speedometer gauges will work with NMEA 2000 senders or resistive type senders with an analog converter.	
Product Type:	Speedometer Gauge	
Product Name:	NMOB	
Bezel:	SUS 316 Stainless Steel	
Face Plate:	Black	White
Mounting Dimension:	85mm, 3 3/8"	
Protection Rating:	IP 67	
Input Signal:	NMEA 2000 & J1939	
Indicating Range:	0 - 60MPH	
Operating Voltage:	12V/24V	
Background light	Red LED	
Connector:	Standard NMEA 2000 cable. 1 meter long	
Movement:	Cross coil motor movement	

Installation Instructions



INSTALLATION STEPS

1. Cut a 85 mm(3 3/8") diameter panel hole(# II).You will need a minimum clearance of 85 mm(3 3/8") behind the panel to fit the gauge(# III).
2. Place the gauge body (# III) in the panel hole(# II),and then fasten it with fastening ring(# I).
3. Insert wire harness into port, and connect the ventilation hose with the bronze fitting of speedometer. Please make sure the connection is tight.
4. According to wiring instruction to do wire connection. Gauge can be connected to 12VDC and 24VDC power directly.
5. Select either red or yellow backlight by your fondness.